



LIFTING CLAMPS & MAGNETS

IP10



For vertical lifting, turning and transfer

- Available in capacities of .5 through 30 metric tons (higher Working Load Limits are available upon request).
- Wide variety of jaw openings available: 0 to 155mm.
- Welded alloy steel body for strength and smaller size. Forged alloy components, where required.
- Individually Proof Tested to 2 times the Working Load Limit with certification.
- Company name (Crosby IP), logo, Working Load Limit and jaw opening permanently stamped on body.
- Each product is individually serialized, with the serial number and Proof Load test date stamped on body. User manual and test certificate included with each clamp.
- Available in a variety of styles:
  - IP10 - Standard clamp for materials with a surface hardness to 363HV10 (345 HB).
  - IP10J - Larger jaw opening.
  - IP10S - For use with stainless steel material.
  - IP10H - For use with materials with a surface hardness to 472HV10 (450 HB).
- Full 180° turning range for material transfer, turning or moving.
- Lock open, lock closed ability with latch for pretension on material and then release of material.
- For plate surface hardness till 279HV10, only 5% min. WLL is needed.
- Maintenance and repair kits are available.
- Minimum WLL is 5% of maximum WLL for .5t IP10 only.
- Minimum WLL is 10% of maximum WLL for all other IP10, IP10J, IP10S, IP10H clamps.

IP10H



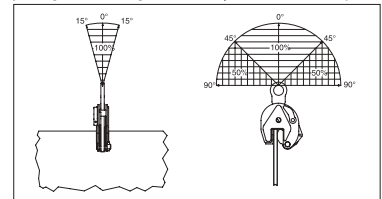
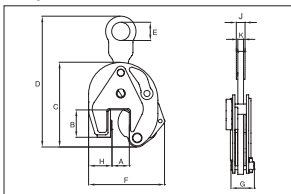
Load Rated

Model IP10 / IP10J / IP10S / IP10H

Model	Working Load Limit (t)*	Stock No.	Weight Each (kg)	Dimensions (mm)										
				Jaw A	B	C	D	E	F	G	H	J	K	
IP10	0.5	2701674	1.8	0 - 16	44	130	203	40	115	42	28	-	11	
IP10	1	2701662	2.2	0 - 20	45	139	212	40	127	42	38	-	11	
IP10	2	2701676	7.6	0 - 35	78	201	330	70	188	64	55	-	16	
IP10	3	2701664	13.8	0 - 40	100	253	434	75	222	78	60	-	20	
IP10	4.5	2701666	15.0	0 - 40	100	253	434	75	227	82	65	-	20	
IP10	6	2701668	23.5	0 - 50	126	302	517	80	292	84	95	40	20	
IP10	9	2701670	27.5	0 - 50	126	325	445	80	310	94	104	44	25	
IP10	12	2701678	49.0	0 - 54	160	392	574	80	433	121	137	41	25	
IP10	16	2701682	68.0	5 - 64	180	463	686	88	492	121	153	49	25	
IP10	22.5	2701686	108	5 - 80	222	554	803	110	565	153	186	54	30	
IP10	30	2701690	124	5 - 80	222	554	803	110	565	153	186	54	30	
With larger jaw opening														
IP10J	0.5	2701646	1.8	15 - 30	45	128	209	40	128	42	32	-	11	
IP10J	1	2702462	2.5	20 - 40	55	151	207	40	141	42	41	-	11	
IP10J	3	2702458	16.4	40 - 80	115	271	432	75	276	78	67	-	20	
IP10J	4.5	2702460	18.0	40 - 80	115	271	432	75	281	82	72	-	20	
IP10J	6	2701705	24.5	50 - 100	126	302	506	80	336	84	95	40	20	
IP10J	9	2701672	28.5	50 - 100	126	325	542	80	360	94	105	44	25	
IP10J	12	2701680	58.0	54 - 108	178	438	620	80	491	121	136	41	25	
IP10J	16	2701684	80.0	64 - 128	208	521	734	88	562	121	160	45	25	
IP10J	22.5	2701688	131.0	80 - 155	255	628	883	110	660	139	196	49	25	
IP10J	30	2701692	147.0	80 - 155	255	628	887	110	660	153	196	54	30	
For stainless steel - with fixed hoisting eye														
IP10S	0.5	2702274	1.8	0 - 20	44	130	203	40	115	42	28	11	11	
IP10S	1	2702262	2.2	0 - 35	45	139	212	40	127	42	38	11	11	
IP10S	2	2702276	7.6	0 - 40	78	201	330	70	188	64	55	16	16	
IP10S	3	2702264	13.8	0 - 40	100	253	434	75	222	78	60	20	20	
IP10S	4.5	2702266	15.0	0 - 50	100	253	434	75	227	82	65	20	20	
IP10S	6	2702268	23.5	0 - 50	126	302	517	80	292	84	95	20	20	
IP10S	9	2702270	27.5	0 - 54	126	325	544	80	310	94	104	25	25	
IP10S	12	2702278	49.0	0-16	160	392	574	80	433	121	137	25	25	
For very hard materials - with fixed hoisting eye														
IP10H	0.5	2702174	1.8	0-16	44	130	207	40	115	42	28	11	11	
IP10H	0.75	2702162	2.2	0-20	45	139	219	40	130	42	38	11	11	
IP10H	1	2702176	7.6	0-35	78	201	330	70	188	64	55	16	16	
IP10H	2	2702164	13.8	0-40	100	253	434	75	222	78	60	20	20	
IP10H	3	2702166	15.0	0-40	100	253	434	75	227	82	65	20	20	
IP10H	4.5	2702168	23.5	0-50	126	302	517	80	292	84	95	20	20	
IP10H	6	2702170	27.5	0-50	126	325	544	80	310	92	105	25	25	

12

Design Factor based on EN 13155 and ASME B30.20. Model IP10 available in 40t, 55t and 100t on request. Model IP10R (remote control opening and closing via a cable) available on request.





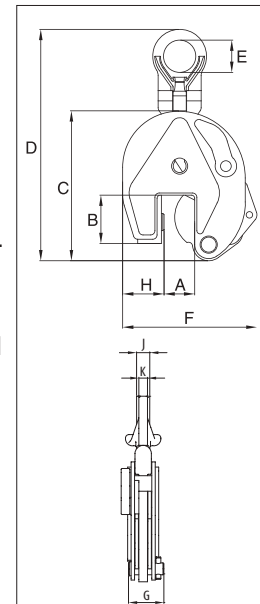
## LIFTING CLAMPS & MAGNETS

IPU10A



### For vertical transport of plates

- Available in capacities of 1, 2 and 6 metric tons (higher Working Load Limits are available upon request).
- Jaw openings available: 0 to 50mm.
- Welded alloy steel body for strength and smaller size. Forged alloy components where required.
- Individually Proof Tested to 2 times the Working Load Limit with certification.
- Company name (Crosby IP), logo, Working Load Limit and jaw opening permanently stamped on body.
- Each product is individually serialized, with the serial number and Proof Load test date stamped on body. User manual with test certificate is included with each clamp.
- Full 180° turning range for material transfer, turning or moving.
- Lock open, lock closed ability with latch for pretension on material and then release of material.
- Minimum WLL of 10% of Maximum WLL.
- Maintenance and repair kits are available.
- For use with materials with a plate surface hardness to 279HV10, only 5% of minimum WLL is needed.

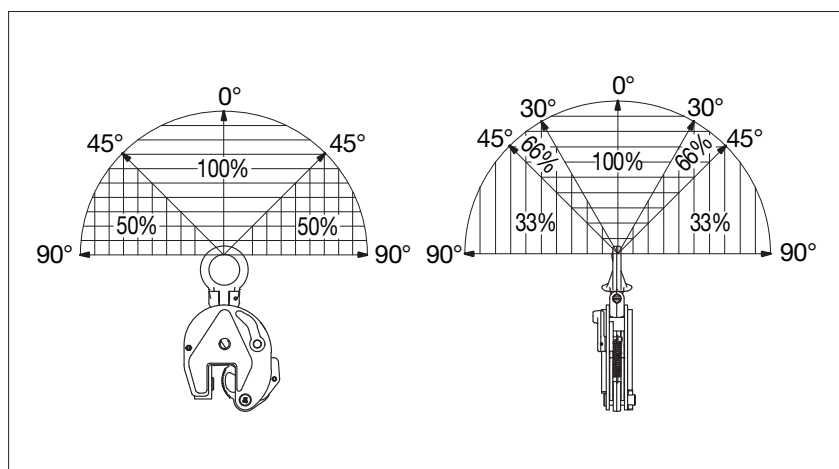


Load Rated

### Model IPU10A

Model	Working Load Limit (t)*	Stock No.	Weight Each (kg)	Dimensions (mm)									
				Jaw A	B	C	D	E	F	G	H	J	K
IPU10A	1	2701628	2.3	0 - 20	45	139	225	40	127	42	38	-	11
IPU10A	2	2701629	8.4	0 - 35	78	201	368	70	188	64	55	-	16
IPU10A	6	2701638	25.4	0 - 50	126	302	525	80	292	84	95	44	20

\* Design Factor based on EN 13155 and ASME B30.20.



12